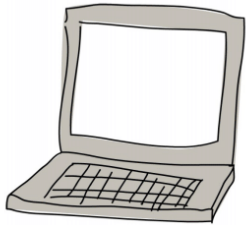


## THE INCLUSION SUPPORT PROGRAMME OUTCOMES MEASUREMENT PROJECT: A QUICK GUIDE FOR SERVICES

In this project we want to hear from you about your experiences of the *Inclusion Support Programme*. This is why **we are asking you to complete a survey**. What you tell us through the survey will help us understand the best ways of supporting inclusive practice in early and middle childhood services across Australia. This document is a quick guide for the steps involved in participating in this project.



### 1. REGISTER FOR THE SURVEY

The first step is to REGISTER your interest in the study. To register and receive an information pack please go to:

[https://mgedu.qualtrics.com/jfe/form/SV\\_5vBke50bONm6DgF](https://mgedu.qualtrics.com/jfe/form/SV_5vBke50bONm6DgF)

The information pack includes an overview of the project, a reference guide, and a short video.



### 2. CHOOSE WHETHER YOU WANT TO PARTICIPATE

Once you have registered for the study, we will send you an email with information and an individual link to the survey. You can use this survey link so that you can start and stop the survey as many times as you need.

Please think about the information provided and decide if you want to participate.



### 3. ANSWER THE SURVEY QUESTIONS

If you choose to take part, you can now **complete the survey**.

The survey has some short answer questions where you write your answer, as well as statements where you need to choose a level of agreement or disagreement. There are no 'right' or 'wrong' answers, just give the answer that comes into your head.

If you would like support, please ask your Inclusion Professional. If you have any further questions please email us at: [InclusionResearchProject@gmail.com](mailto:InclusionResearchProject@gmail.com)



### 4. DOWNLOAD A COPY OF YOUR COMPLETED SURVEY

When you have completed the survey please download a copy of your completed survey. You can also choose if you want to enter the PRIZE DRAW.

It would be helpful if you could let your inclusion professional know that you chose to participate.

THANK YOU! We value and appreciate you taking the time to share your experiences and perspectives with us. We will ask you if you are happy to complete the survey again in about 12 months from now.